

4MP HD ColorHunter Wide Angle Fixed Bullet Network Camera

IPC2K24SE-DF40KMC-WL-I0



Features

- High quality image with 4MP, 1/2.9"CMOS sensor
- 4MP (3840*1080)@25fps (Human Body Detection off) ; 4MP (3840*1080)@20fps (Human Body Detection on)
- The double lens splicing technology is adopted to realize the horizontal viewing angle of 160.00° ±10°
- Ultra 265, H.265, H.264, MJPEG
- Support Human Body Detection
- Colorhunter technology ensures 24-hour full-color images
- Alarm:1 in/1 out
- Audio: 1 in/1 out
- Support 256 GB micro SD card
- 12V DC/PoE power supply

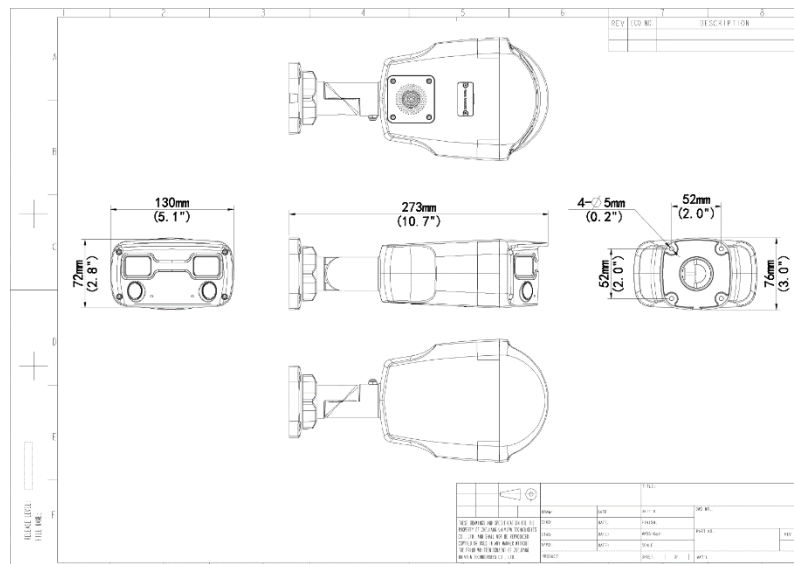
Specifications

| Camera | Description |
|-----------------------------------|---|
| Resolution | 4MP |
| Sensor | 1/2.9"CMOS |
| Min. Illumination | Colour: 0.0005 lux (F1.0, AGC ON) |
| Shutter | Auto/Manual, 1 ~ 1/100000s |
| Adjustment angle | Pan: 0° ~ 360° , Tilt: 0° ~ 90° , Rotate: 0° ~ 360° |
| S/N | >52dB |
| WDR | DWDR |
| Lens | Description |
| Lens type | 2*4.0mm |
| Iris Type | Fixed |
| Iris | F1.0 |
| Field of View (H) | 160.0° ± 10° |
| Field of View (V) | 43.2° |
| Field of View (D) | 180.1° ± 10° |
| DORI | Description |
| DORI Distance (Lens) | 4.0mm |
| DORI Distance (Detect) | 64.3m(210.9ft) |
| DORI Distance (Observe) | 25.7m(84.3ft) |
| DORI Distance (Recognize) | 12.9m(42.3ft) |
| DORI Distance (Identify) | 6.4m21.0ft) |
| Illuminator | Description |
| Illumination Distance(Warm Light) | 30m |
| Light On/Off Control | Auto/Manual |
| Video | Description |
| Video Compression | Ultra 265;H.265;H.264;MJPEG |
| H.264 code profile | Baseline profile, Main profile, High profile |
| Frame Rate | Main Stream: 4MP (3840*1080), Max 25fps (Human Body Detection off) Sub Stream: 1920*540, Max 25fps |
| Video Bit Rate | 128 Kbps~16 Mbps |
| U-code | Support |
| OSD | Up to 8 OSDs |
| Privacy Mask | Up to 4 areas |
| ROI | Up to 8 areas |
| Video stream | Double streams |
| Image | Description |
| White Balance | Auto; Outdoor; Fine Tune; Sodium Lamp; Locked; Auto2 |

| | |
|----------------------------|---|
| Digital noise reduction | 2D/3D DNR |
| Smart Illumination | Support |
| Flip | N/A |
| Dewarping | N/A |
| HLC | Support |
| BLC | Support |
| Defog | Digital Defog |
| Intelligent | Description |
| Smart intrusion prevention | N/A |
| Recognition | N/A |
| Statistical Analysis | N/A |
| Events | Description |
| Basic Detection | Human body detection;Motion detection;Tampering alarm; |
| General Function | Watermark;IP Address Filtering;Alarm input;Alarm output;Access Policy;ARP Protection;RTSP Authentication;User Authentication;HTTP Authentication |
| Storage | Description |
| Edge Storage | Micro SD, up to 256 GB |
| Network Storage | ANR, NAS(NFS) |
| Network | Description |
| Protocols | IPv4;IPv6;IGMP;ICMP;ARP;TCP;UDP;DHCP;PPPoE;RTP;RTSP;RTCP;RTMP;DNS;DDN S;NTP;FTP;UPnP;HTTP;HTTPS;SMTP;802.1x;SNMP;QoS;SSL/TLS;SSH |
| Compatible Integration | ONVIF (Profile S, Profile G, Profile T);API;SDK |
| User/Host | Up to 32 users. 3 user levels: administrator, common user and operator |
| Security | Password protection;Strong password;HTTPS encryption;Export operation logs;Basic and digest authentication for RTSP;Digest authentication for HTTP;TLS 1.2;WSSE and digest authentication for ONVIF |
| Client | EZStation;EZView; EZLive |
| Web Browser | Plug-in required live view: IE 10 and above, Chrome 45 and above, Firefox 52 and above, Edge 79 and above;Plug-in free live view: Chrome 57.0 and above, Firefox 58.0 and above, Edge 16 and above |
| Interface | Description |
| Audio I/O | 1 Input: impedance 35k Ω ; amplitude 2V [p-p];1 Output: impedance 600 Ω ; amplitude 2V [p-p] |
| Alarm I/O | 1/1 |
| Serial Port | N/A |
| Built-in Speaker | Support |
| WIFI | N/A |
| Network | 1 * RJ45 10M/100M Base-TX Ethernet |
| Video Output | N/A |
| Certification | Description |
| EMC | CE-EMC (EN 55032: 2015+A1:2020,EN 61000-3-3: 2013+A1: 2019,EN IEC 61000-3-2: 2019+A1: 2021,EN 55035: 2017+A11:2020) FCC (FCC CFR 47 part15 B, ANSI C63.4-2014) |

| | |
|---------------------|---|
| Safety | CE LVD (EN 62368-1:2014+A11:2017) CB (IEC 62368-1:2014) UL (UL 62368-1, 2nd Ed., Issue Date: 2014-12-01) |
| Environment | CE-RoHS (2011/65/EU;(EU)2015/863); WEEE (2012/19/EU); Reach (Regulation (EC) No 1907/2006) |
| Protection | IP67 (IEC 60529:1989+AMD1:1999+AMD2:2013) IK10 (IEC 62262:2002) |
| General | Description |
| Power | DC 12V ±25%, PoE (IEEE 802.3af) Power consumption: Max 6.5W |
| Power Interface | Ø 5.5mm coaxial power plug |
| Dimensions | 273 × 130 × 76mm (10.7" × 5.1" × 3.0") |
| Weight | 0.95kg (2.09lb) |
| Material | Metal |
| Working Environment | -30° C ~ 60° C (-22° F ~ 140° F), Humidity: ≤95% RH (non-condensing) |
| Storage Environment | -30° C ~ 60° C (-22° F ~ 140° F), Humidity: ≤95% RH (non-condensing) |
| Surge protection | 4KV |
| Reset button | Support |
| Web Client Language | 20 Languages Traditional Chinese, English, Simplified Chinese, Polish, German, Russian, French, Korean, Dutch, Czech, Portuguese (Europe), Portuguese (Brazil), Japanese, Thai, Turkish, Spanish (Latin America), Spanish (Europe), Hungarian, Italian, Vietnamese |

Dimensions



Accessories

TR-JB07-D-IN

Bullet Junction Box(Support wiring from behind)



TR-JB06-A-IN

Middle Bullet Junction Box(Elegant White)



TR-UP06-B-IN

Bullet Pole Mounting Bracket



TR-UP06-C-IN

Pole Mounting Bracket for Bullet Junction Box Only



TR-A01-IN

NPT 3/4" Waterproof Cable Gland

TR-UC08-C

Bullet&Dome Corner Mounting Bracket



Zhejiang Uniview Technologies Co., Ltd.

No. 369, Xietong Road, Xixing Sub-district, Binjiang District, Hangzhou City, 310051, Zhejiang Province, China

Email: overseasbusiness@uniview.com; globalsupport@uniview.com

<http://www.uniview.com>

©2023-2024 Zhejiang Uniview Technologies Co., Ltd. All rights reserved.

*Product specifications and availability are subject to change without notice.

*Despite our best efforts, technical or typographical errors may exist in this document. Uniview cannot be held responsible for any such errors and reserves the right to change the contents of this document without prior notice.